

Name: _____

Date: _____

Day 1

Spell the Words

Spell the words in the sound boxes. There will not always be a sound to fill in every box in the grid.

tusk

trunk

munch

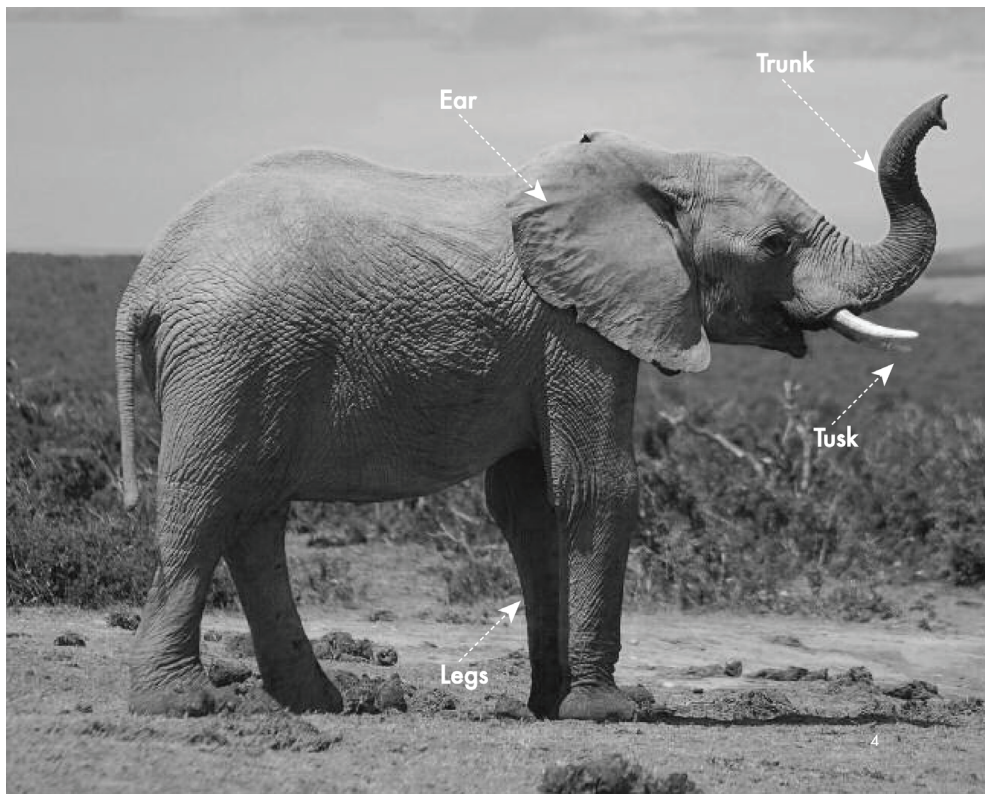
Text Features

Circle the name of the text feature on this picture.

labels

boldface headings

Circle all of the text features on the picture.



Reading Series Two:
Interesting Elephants
Day 1 Homework, Page 1 of 2

Day 1, continued

Connecting Spelling to Meaning

First, read each example from the book. Next, find the word in **bold** in the example. Then, write the base word in the “base noun” column. After that, write the word sum. Finally, circle the pronunciation of the ending. Tell if it sounds like an **s** or a **z**, or **iz**.

Example from the book	Base noun	Word sum	Pronunciation of ending
What animal can munch 23 bushels of grasses and trees ...			/s/ /z/ /iz/ /s/ /z/ /iz/ /s/ /z/ /iz/
...and drink up to 50 gallons of water...			/s/ /z/ /iz/
legs			/s/ /z/ /iz/

Parent Signature _____



Reading Series Two:
Interesting Elephants
Day 1 Homework, Page 2 of 2

Name: _____

Date: _____

Day 2

Read and Think

First, read the text out loud with proper phrasing. Then answer each question in a complete sentence. Underline the evidence for your answers in the text and draw a line to the question it answers.

What animal can munch 23 bushels of grasses and trees...

and drink up to 50 gallons of water each day?

If you said an African elephant, you are correct!

African elephants are the biggest land mammals on the planet.

African elephants can be up to 11 feet tall!

1. How much do African elephants eat in a day? _____

2. How much do African elephants drink in a day? _____

3. How tall can African elephants be? _____

4. How big are African elephants compared to other land mammals? _____

5. Did you underline the evidence in the text? yes no



Day 2, continued

Connecting Spelling to Meaning

First, read each example from the book. Next, find the word in **bold** in the example. Then, write the base word in the “base noun” column. After that, write the word sum. Finally, circle the pronunciation of the ending. Tell if it sounds like an **s** or a **z**, or **iz**.

Example from the book	Base noun	Word sum	Pronunciation of ending
African elephants are the biggest land mammals on the planet.			/s/ /z/ /iz/ /s/ /z/ /iz/

Parent Signature _____



Name: _____

Date: _____

Day 3

Read and Think

First, read the text out loud with proper phrasing. Then answer each question in a complete sentence. Underline the evidence for your answers in the text and draw a line to the question it answers.

The habitat of the African Elephant is the tropical jungles
and grasslands of Africa.

Elephants travel within their habitat.

When the West African summer gets arid,
or when it is hot and there is little water,

Elephants must travel to a river that has water for them to drink.

1. Where do African elephants live? _____

2. Why do African elephants travel? _____

3. What does **arid** mean? _____

4. Did you underline the evidence in the text? yes no



Day 3, continued

Connecting Spelling to Meaning

First, read each example from the book. Next, find the word in **bold** in the example. Then, write the base word in the “base noun” column. After that, write the word sum. Finally, circle the pronunciation of the ending. Tell if it sounds like an **s** or a **z**, or **iz**.

Example from the book	Base noun	Word sum	Pronunciation of ending
The habitat of the African elephant is the tropical jungles and grasslands of Africa.			/s/ /z/ /iz/ /s/ /z/ /iz/

Parent Signature _____



Reading Series Two:
Interesting Elephants
Day 3 Homework, Page 2 of 2

Name: _____

Date: _____

Day 4

Read and Think

First, read the text out loud with proper phrasing. Then answer each question in a complete sentence. Underline the evidence for your answers in the text and draw a line to the question it answers.

A herd is a big pack of animals that feed and travel with each other.

Elephants travel in herds. There can be up to a hundred elephants in a single herd.

1. What is a herd? _____

2. How many elephants are in a herd? _____

3. Did you underline the evidence in the text? yes no

Spell the Words

Spell the words in the sound boxes. There will not always be a sound to fill in every box in the grid.

grab

strand

stretch

swish

dust

branch

Parent Signature _____



Name: _____

Date: _____

Day 5

Turtle Word Strategy

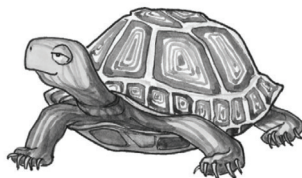
Map and divide each day's words on the Turtle Word Strategy map. Use the Turtle Word Strategy checklist to help you.

Day 4 words: jungle, little

Day 5 word: rumble

		C + le	
t	ur	t	le

Turtle Word Strategy



1. Label the C + le pattern.

C + le
turtle

2. Make a line before the consonant that is part of the C + le spelling.

C + le
tur|tle

3. Make a loop under each syllable.

C + le
tur|tle

4. Read each syllable.

tur/tle

5. Blend the syllables to read the word.

turtle



Day 5, continued

Connecting Spelling to Meaning

First, read the example from the book. Next, find the word in **bold** in the example. Then, write the base word in the “base verb” column. After that, write the word sum. The first one is done for you.

Example from the book	Base verb	Word sum
This trumpeting is like elephant yelling .	trumpet	trumpet + ing → trumpeting
It is like elephant talking .		

Parent Signature _____



Date: _____

What is the most interesting thing you learned about African elephants from this book? You can use more paper to write if you need to.

[illegible]

Duplication for noncommercial purposes only